

AGENDA SUPPLEMENT (1)

Meeting: Pewsey Area Board
Place: Bouverie Hall, Pewsey
Date: Monday 3 July 2017
Time: 7.00 pm

The Agenda for the above meeting was published on Friday 23 June 2017. Additional documents are now available and are attached to this Agenda Supplement.

Please direct any enquiries on this Agenda to Edmund Blick, of Democratic Services, County Hall, Bythesea Road, Trowbridge, direct line 01225 718059 or email edmund.blick@wiltshire.gov.uk

Press enquiries to Communications on direct lines (01225)713114/713115.

This Agenda and all the documents referred to within it are available on the Council's website at www.wiltshire.gov.uk

10 **Partner Updates** *(Pages 3 - 12)*

DATE OF PUBLICATION: Tuesday 27 June 2017

This page is intentionally left blank

Pewsey Area Board Report

July 2017

1. East Community Policing Team

Sector Head:
Inspector Nick Mawson



Sector Deputy:
Sergeant Mark Andrews



Community Coordinator:
PC Teresa Herbert

Pewsey PCSO
PCSO Jonathan Mills

Hello and welcome to this Community Policing Team report.

We have just completed a busy period of attendance to Parish annual meetings in recent weeks, in our efforts to reach as many of the fifty plus Parish and Town councils we work in partnership with. This has allowed for feedback in relation to policing priorities, areas of concern and relevant tasking of officers for local engagement, in addition to our daily policing and tasking commitments.

Our monthly report, established at the commencement of the CPT model, sent to each of our Parish councils has assisted with this process of information sharing. Please do advise our community co-ordinator if you have any further feedback regarding this.

Update from Helen Kennedy, Head of Media Services, Wiltshire Police

Many areas boards are raising the issue that our 101 Call handling for Wiltshire remains below the standards we wish to deliver.

To give context to the current position it is important to understand that there has been a significant shift in the way we manage our demand within the Police Service.



The Community Policing Model recognises that the Police service is being asked to do 'more with less' and helps to address this fact by assessing the demand at the first point of contact. The call handler will assess the threat, harm and risk without necessarily tasking an officer to attend in the first instance. The adage they work to in our Communication Centre is to get it right first time.

As a result of this change in handling we have seen an increase in waiting times for calls to be answered.

However, since we initiated the CPT Model, calls for immediate help have seen an improvement.

It is also important to note that we have engaged in a significant recruitment phase for many roles within the CPT. Police Officers, PCSO, Local Crime Investigators and Prisoner Transport Team members have all been recruited. Where do we find people with the right skills to do these roles? One area is our Communication Centre. These are members of Police Staff who have been trained in aspects of law and have good communication skills. It is not surprising that they then wish to use their training and continue to develop. Consequently recruitment and retention of staff is a challenge, however to reassure you our Communication Centre Leadership team have a well-established rolling recruitment programme in place.

We continue to review and assess where improvements are needed. We are currently exploring solutions including on-line reporting of crime, a more informative website and on-line chat and hope this different access channels will start to be available late summer 2017. We will not solve this issue overnight and are working hard on any problems to deliver the best possible service to those who contact us.

Thank you for your continued support to Wiltshire Police.

Please follow us on:

Twitter <https://twitter.com/wiltshirepolice>

Facebook <https://www.facebook.com/wiltshirepolice/>

Or sign up to Community Messaging <https://www.wiltsmessaging.co.uk/> Our free Community Messaging service will also help keep you updated about policing and crime in your local area.

2. CPT - Current Priorities & Consultation Opportunities:

Current Priorities Pewsey and surrounding areas.

Dwelling and non-dwelling burglaries.

Targeted patrols continue throughout the area in relation to this policing priority. A total of eight burglaries have occurred within the past two months throughout the area. These include two dwelling burglaries; one in Pewsey village itself during the day on 4th May 2017, in which a very small amount of cash was taken following forced entry via the front door. The second incident occurred during the early evening of 19th May in which a property on the outskirts of Great Bedwyn was targeted and jewellery stolen. Enquiries completed linked this latter incident with several others in the Devizes, Marlborough and Swindon area. Two suspects have been arrested on suspicion of a number of burglaries which include distraction offences. Enquiries are continuing.



A total of six non dwelling burglaries have occurred during this two month period. These include one attempt entry to a garage at Alton Priors, two others within Pewsey, garages targeted in which fishing equipment was stolen overnight to 29th May and two generators from another during a two week period to 20th June on Stratton road. A lawnmower has been stolen from a shed in Upavon.

A business in Pewsey was targeted during the early hours of 9th May 2017, in which a very small amount of cash was taken, CCTV checks identified a black Honda Civic as the subject vehicle, Police officers were in the vicinity of this incident at the time of the offence conducting targeted patrols, it is disappointing the incident was not identified at this time.

Wiltshire Police will continue to limit the number of offences by pro-active policing, intelligence gathering and conducting policing operations in these areas.

Our access to CCTV in Pewsey has greatly assisted us with our enquiries and successful detections in relation to a range of incidents in recent years. Thank you.

Theft from motor vehicles

A total of 148 targeted patrols have been completed in relation to this priority. Eight theft from motor vehicle offences have occurred within the past two months in the Pewsey area with locations of New Mill, canalside at Wilcot, Martinsell, Crofton, Milk Hill, Pewsey village, Everleigh road and Woodborough.

This reduction is pleasing compared with the previous figures of 19 as reported at the last Pewsey Area Board. Our policing team continue to deploy resources and undertake community engagement in relation to this priority. Our local officers and the community co-ordinator were engaged in a week of community activity at the end of June - on tour with the exhibition vehicle which visited the Pewsey villages that week.

Several of the beauty spot locations recently targeted currently have no Police warning signage - having been forcibly removed, which includes our posters. Thank you for funding further metal Police warning notice signage for fitting at such locations, these will alert our visitors of the need to be vigilant and not to leave any valuables within parked and unattended vehicles.

We are pleased to report, following a lengthy investigation, that two nominals from the south of the county have recently been charged with conspiracy to steal. The case is ongoing and has not yet reached trial. There are a very large amount of offences that they are suspected of committing and I will look to update you further in subsequent Area Boards.

Update on Rural Crime Partnership

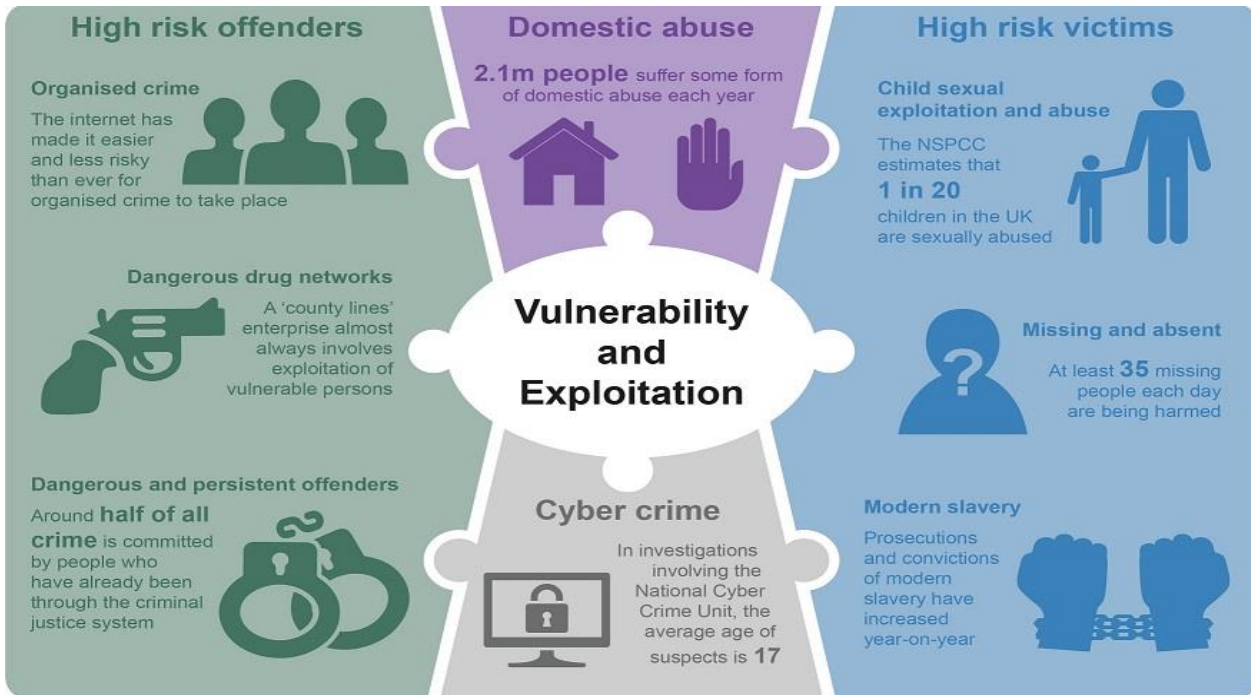
Recent meetings have been held with local farmers in East Wiltshire and the WCC Rights of Way Officer in relation to discussions concerning the use of byways for illegal purposes which is most impactful upon our East Wiltshire community. We are working together with our partners to consider relevant legislation and powers available for our use to robustly manage those offenders and offences identified.

Activity around hare coursing continues to be a focus of concern and our rural crime team are planning forthcoming policing operations.

Operation ASTEN has involved dealing with illegal off roaders on Salisbury plain. These policing operations have continued in recent weeks with engagement and relevant disposal of offences identified.

3. Wiltshire Police Control strategy

Below is our Control Strategy for your reference. This focuses on how we conduct our operational policing based on the Police and Crime Plan. We will continue to align our resources with the threat/harm/risks presented in line with the control strategy.



Cybercrime

There have been no reported instances of cybercrime since the last meeting.

Advice and guidance can be found at <http://www.actionfraud.police.uk>

Domestic Abuse

Whilst Domestic Abuse is now much better understood, there are still too many people suffering in silence and it still takes many incidents before issues get reported to Police or other agencies. We always take positive action at every report of Domestic Abuse that we attend.



High Risk Victims

We continue to support those most vulnerable in our community via a range of multi-agency teams and referral processes, including ASBRAC - Anti social behaviour risk assessment conference for a local situation of concern, this allows for engagement by our partners at WCC - Public protection team, housing officers and Social Services.



High Risk Offenders

The CPT continue to work closely with the Public Protection Department to identify persistent or dangerous offenders, to engage with them and to take positive action where required.

Events

Our local officers continue to visit The Bouverie Hall in Pewsey for monthly community consultations held the first Tuesday of each month. We invited Karen Pearson; the Safe and Well Advisor from Wiltshire and Dorset Fire Service along to this month's session which was well received and allowed for information pack distribution and referrals for home visits to be obtained.

Details were provided to members in attendance to the recent Canal and Rivers partnership meeting at Wootton Rivers.

Event planning

A toolkit is available from Wiltshire Council which gives fantastic guidance and advice for organising most types of events including topics ranging from traffic management to toilets and provides contact details for which agencies and departments need to be contacted when applying for various licences or road closures. It can be found at <http://www.wiltshire.gov.uk/public-events-toolkit.pdf> In essence all organisers must be responsible for identifying any risks and putting in measures to remove or reduce them.

Nick Mawson
Sector Inspector,
Wiltshire East CPT

This page is intentionally left blank

Pewsey Area Board Report, 03rd July 2017

Statement Regarding Fire at Grenfell Tower

Seth Why, the Head of Fire Safety for Dorset & Wiltshire FRS issued the following:

Following the tragic incident at Grenfell Tower in London it was thought appropriate to provide clarity on some key areas where questions may be asked from our communities, so that we can ensure that we are delivering a consistent message.

Importantly we must also make sure that we do not pre-judge any issues that may arise out of the public enquiry.

Stay Put Strategy

We continue to work with local authorities, developers, and tenants to help ensure that the fire safety arrangements in high rise accommodation is safe and appropriate.

The advice provided is based on effective fire safety arrangements that are required, proposed, and then provided in the building – these will include effective compartmentation of the building and suitably protected means of escape.

If there is a fire inside a flat or maisonette our advice is to alert all the people in the flat and leave, closing all doors on the way out. If there is lots of smoke within the flat, residents should crawl along the floor where the air should be clearer. The pre-planned escape plan should then be followed. The stairs rather than the lift should always be used and 999 called as soon as the individual is in a safe place.

If there is a fire elsewhere in the building then the structure of flats – walls, floors and doors– are designed to give appropriate protection. If there is a fire in the another part of the, then it is usually safer to stay in the flat unless the heat or smoke from the fire is having an effect. If someone stays put, they should still immediately call 999 for advice and to ensure that FRS crews have been notified.

This generic evacuation strategy means that the majority of purpose built blocks of flats will not be designed with a common alarm system within the building. Each flat will have their own stand-alone detection and alarm which will not normally be linked to any other area of the block. There are other areas such as undercover car parks which may have a detection and alarm system, but again, will not normally be linked to any other part of the block. Any detectors within the common corridors or staircases are likely to be there to activate any ventilation system but will not be designed to sound an audible warning.

The advice in this statement is part of a preventative approach to helping tenants develop an initial and safe escape plan. Of course, once a 999 call is made and firefighters arrive at the fire, then the advice may be reinforced or changed depending on the nature of the fire and the performance of the particular building.

Response

Incidents

April 2017 – June 2017

Category	Pewsey
False Alarm	7
Fire	15
Special Service	1
Other	5
Total	28

Availability of RDS appliance %

April 2017	Appliance	Day (06:00 - 18:00)	Night (18:00 - 06:00)	Total
% Available	KT37P1	91.46%	99.58%	95.52%

May 2017	Appliance	Day (06:00 - 18:00)	Night (18:00 - 06:00)	Total
% Available	KT37P1	73.12%	98.38%	85.75%

On-Call Recruitment

We are continually trying to improve the availability of our appliances at Pewsey by reviewing hours and contracts and numbers of personnel, and currently have a number individuals who are in the process. It is hoped that they will be available as part of our crew towards the end of the summer period. Another recruitment is planned for 03/07/2017 and it is hoped that this will prove to be as popular as before with some individuals also starting the recruitment process.

Community Engagement Work

Karen Pearson is the Safe and Well Advisor that covers the Pewsey area. Please contact her, karen.pearson@dwfire.org.uk to arrange for her to talk to your group or an individual visit.



A Safe and Well visit is available and is **FREE** and normally last about one hour covering topics such as:

- Using electricity safely
- Cooking safely
- Making an escape plan
- What to do if there is a fire
- Keeping children safe
- Good practice – night time routine and other points relevant to you
- Identifying and discussing any further support you may need if necessary

If you own/occupy a thatch property, are living alone, have a young family, are over 65 or a smoker please get in contact with us. We want to help make you safer in your own home. If you or someone you know has mobility or sight and hearing impairments please suggest a Safe and Well visit.

Visit <http://www.dwfire.org.uk/news/new-name-new-contact-details-same-service/> to book one.

Tom Brolan
District Commander Amesbury, Pewsey & Ludgershall
Email: tom.brolan@dwfire.org.uk
Tel: 01722 691245
Mobile: 07825061071

This page is intentionally left blank